

1561 BUCKEYE DRIVE

MILPITAS | CALIFORNIA

1561 BUCKEYE DRIVE



VIEW VIRTUAL TOUR

FOR LEASE

±44,815 SF SINGLE STORY R&D, LAB, MANUFACTURING BUILDING

SHERMAN CHAN
Senior Vice President
Lic. 01046769
408.453.7488
Sherman.chan@cbre.com

BEN ROJAS
Vice President
Lic. 01211766
408.453.7473
Ben.rojas@cbre.com

JOEY MCSWEENEY
Sales Associate
Lic. 02033713
408.467.7553
Joey.mcsweeney@cbre.com



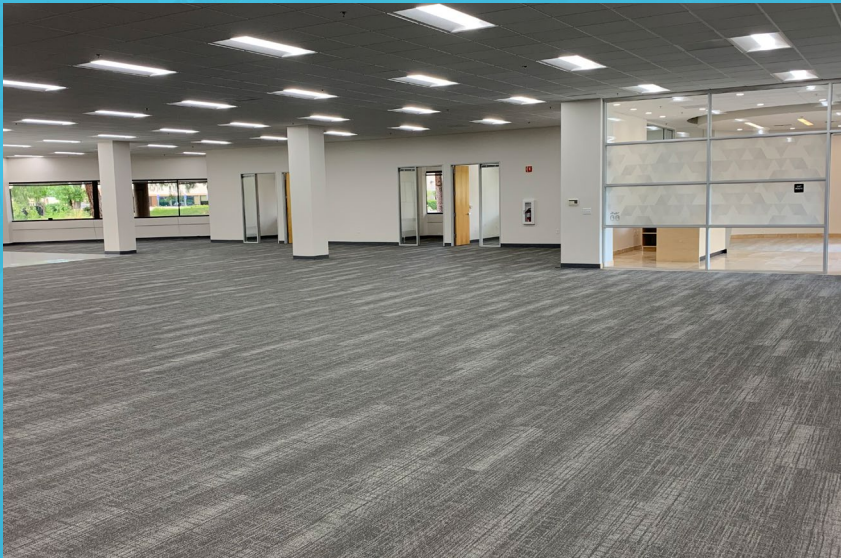
CBRE



MOVE IN READY



NEWLY COMPLETED MARKET READY IMPROVEMENTS



UPGRADED INTERIORS



COMBINATION OFFICE, LABS, WAREHOUSE

BUILDING HIGHLIGHTS



- ±44,815 SF SINGLE STORY OFFICE/FLEX BUILDING



- TWO (2) GRADE LEVEL / DOCK DOORS COMBO (COVERED)



- ±16' - ±18' CLEAR HEIGHT



- 2,000 AMPS @ 277/480V 3-PHASE POWER



- 3.64/1,000 PARKING RATIO



- LOCATED IN PRESTIGIOUS OAK CREEK BUSINESS PARK



- SHORT WALK TO VTA LIGHT RAIL STOP WITH ACCESS TO MILPITAS BART STATION

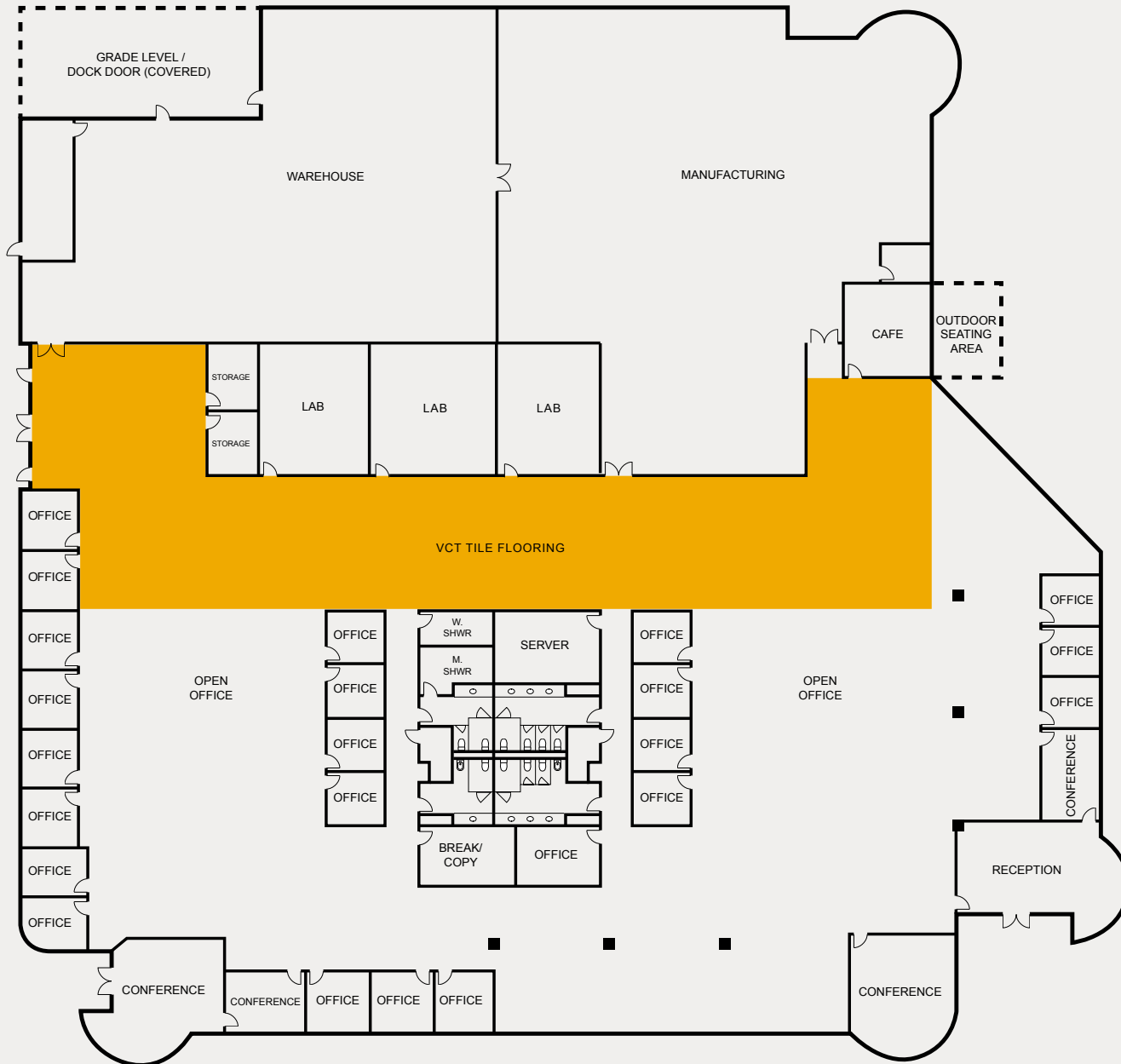


- EXCELLENT ACCESS TO I-880 AND HIGHWAY 237

SITE PLAN



FLOOR PLAN



LOCATION MAP



TRANSPORTATION MAP





UPGRADED INTERIORS



1561 BUCKEYE DRIVE

MILPITAS | CALIFORNIA



SHERMAN CHAN
Senior Vice President
Lic. 01046769
408.453.7488
Sherman.chan@cbre.com

BEN ROJAS
Vice President
Lic. 01211766
408.453.7473
Ben.rojas@cbre.com

JOEY MCSWEENEY
Sales Associate
Lic. 02033713
408.467.7553
Joey.mcsweeney@cbre.com

© 2020 CBRE, Inc. All rights reserved. This information has been obtained from sources believed reliable, but has not been verified for accuracy or completeness. You should conduct a careful, independent investigation of the property and verify all information. Any reliance on this information is solely at your own risk. CBRE and the CBRE logo are service marks of CBRE, Inc. All other marks displayed on this document are the property of their respective owners, and the use of such logos does not imply any affiliation with or endorsement of CBRE. Photos herein are the property of their respective owners. Use of these images without the express written consent of the owner is prohibited. PMStudio_December2019



CBRE