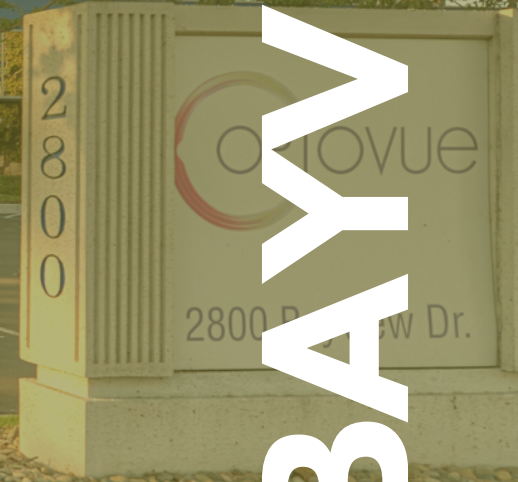




28000  
BAYVIEW DR

FREMONT | CA



**R&D/OFFICE SPACE FOR LEASE**  
**59,736 SQ FT**

**ROGER FIELDS**

(650) 327-2014 OFFICE

(650) 207-1610 CELL

rfields@peninsulaland.com

**LOIS QUILALANG**

(650) 327-2014 OFFICE

(510) 798-0336 CELL

lois@peninsulaland.com

**PARKER FIELDS**

(650) 327-2014 OFFICE

(650) 208-9979 CELL

parker@peninsulaland.com

**MARY BLASER**

650) 327-2014 OFFICE

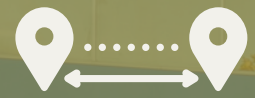
(408) 309-4049 CELL

mary@peninsulaland.com





# PROPERTY HIGHLIGHTS



**EASY ACCESS TO HIGHWAY 880**



**1.5 STORY BUILDING WITH AMPLE PARKING**



**4 ROLL-UP DOORS (2 GRADE LEVEL)**



**2000 AMPS  
480/277 3 PHASE**



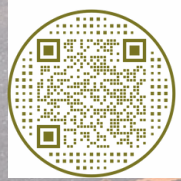
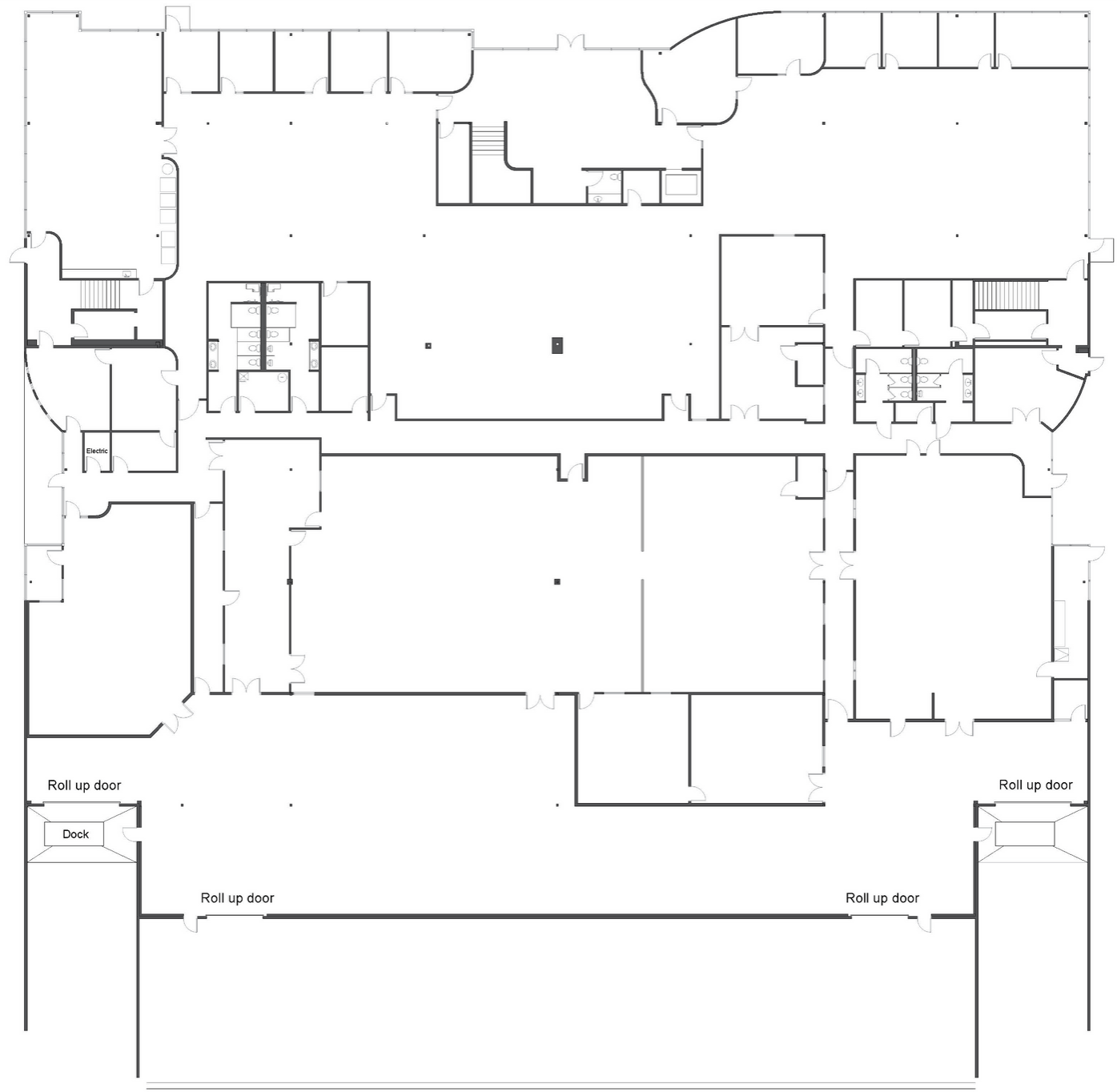
**LAB SPACE**



**18' CLEAR HEIGHT**

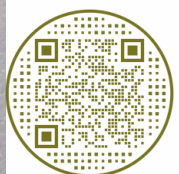
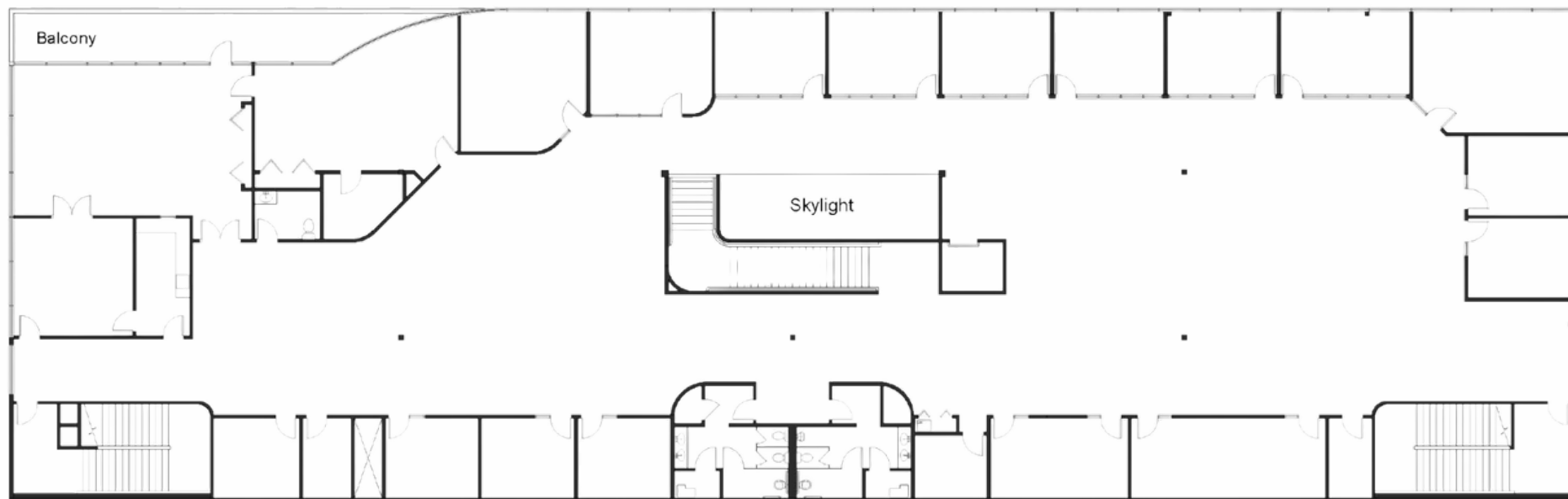
# FLOOR PLAN

FIRST FLOOR



# FLOOR PLAN

## SECOND FLOOR





# SURROUNDING AMENITIES



Bay Club Fremont

Courtyard Hotel

2800 Bayview

262

Oasaka Market

Safeway

Tesla

880





view tour



## FOR MORE INFORMATION, PLEASE REACH OUT TO THE LISTING TEAM:

**ROGER FIELDS**

(650) 327-2014 OFFICE

(650) 207-1610 CELL

rfields@peninsulaland.com

**LOIS QUILALANG**

(650) 327-2014 OFFICE

(510) 798-0336 CELL

lois@peninsulaland.com

**PARKER FIELDS**

(650) 327-2014 OFFICE

(650) 208-9979 CELL

parker@peninsulaland.com

**MARY BLASER**

650) 327-2014 OFFICE

(408) 309-4049 CELL

mary@peninsulaland.com

[www.peninsulaland.com](http://www.peninsulaland.com)