

2000

ALAMEDA

SAN MATEO, CA

SUITE 100
16,989 ft²

ROGER FIELDS
(650) 327-2014 OFFICE
(650) 207-1610 CELL
rfields@peninsulaland.com

LOIS QUILALANG
(650) 327-2014 OFFICE
(510) 798-0336 CELL
lois@peninsulaland.com

PARKER FIELDS
(650) 327-2014 OFFICE
(650) 208-9979 CELL
parker@peninsulaland.com

MARY BLASER
(650) 327-2014 OFFICE
(408) 309-4049 CELL
mary@peninsulaland.com

view tour



PROPERTY HIGHLIGHTS

2000 ALAMEDA

SUITE 100 | 16,989 ft²



Easy Access to Highways
92, 280 & 101



13 Min Drive to SFO
30 Min to SJC



Ample Parking



Central Peninsula
Location



Near Amenities



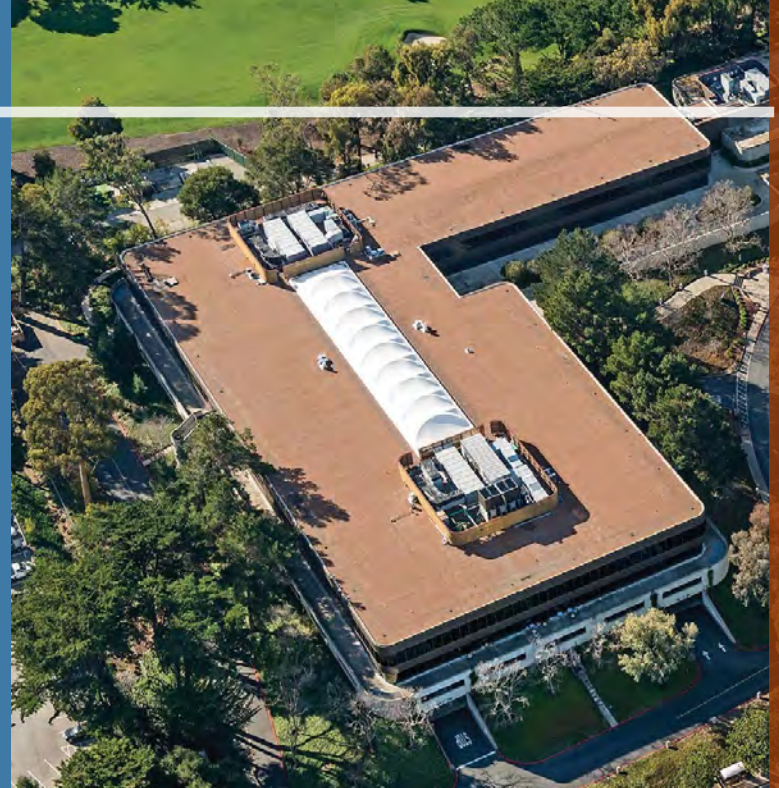
Property Manager on
Site



LEED Gold Certified



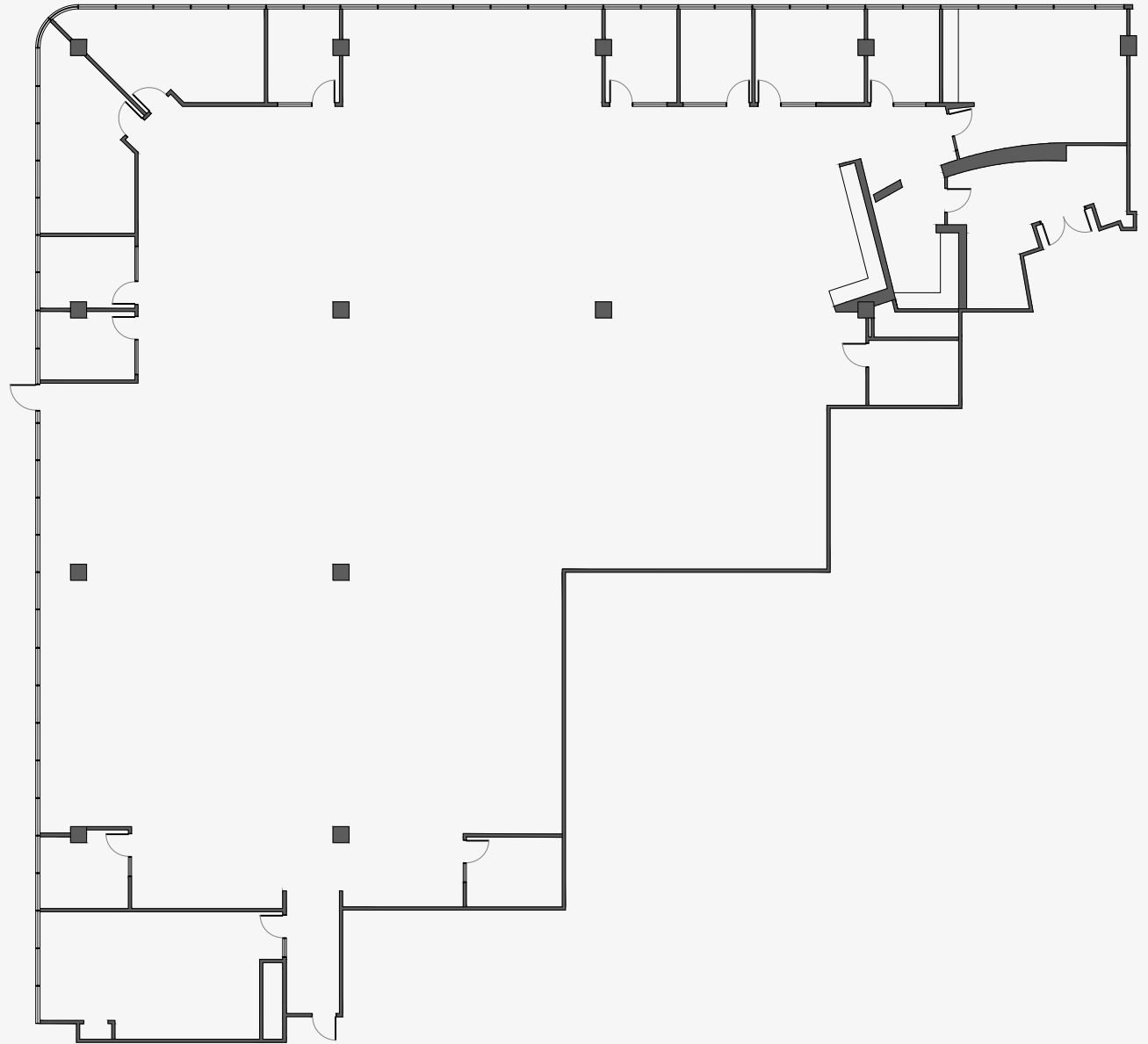
2 Stories Building

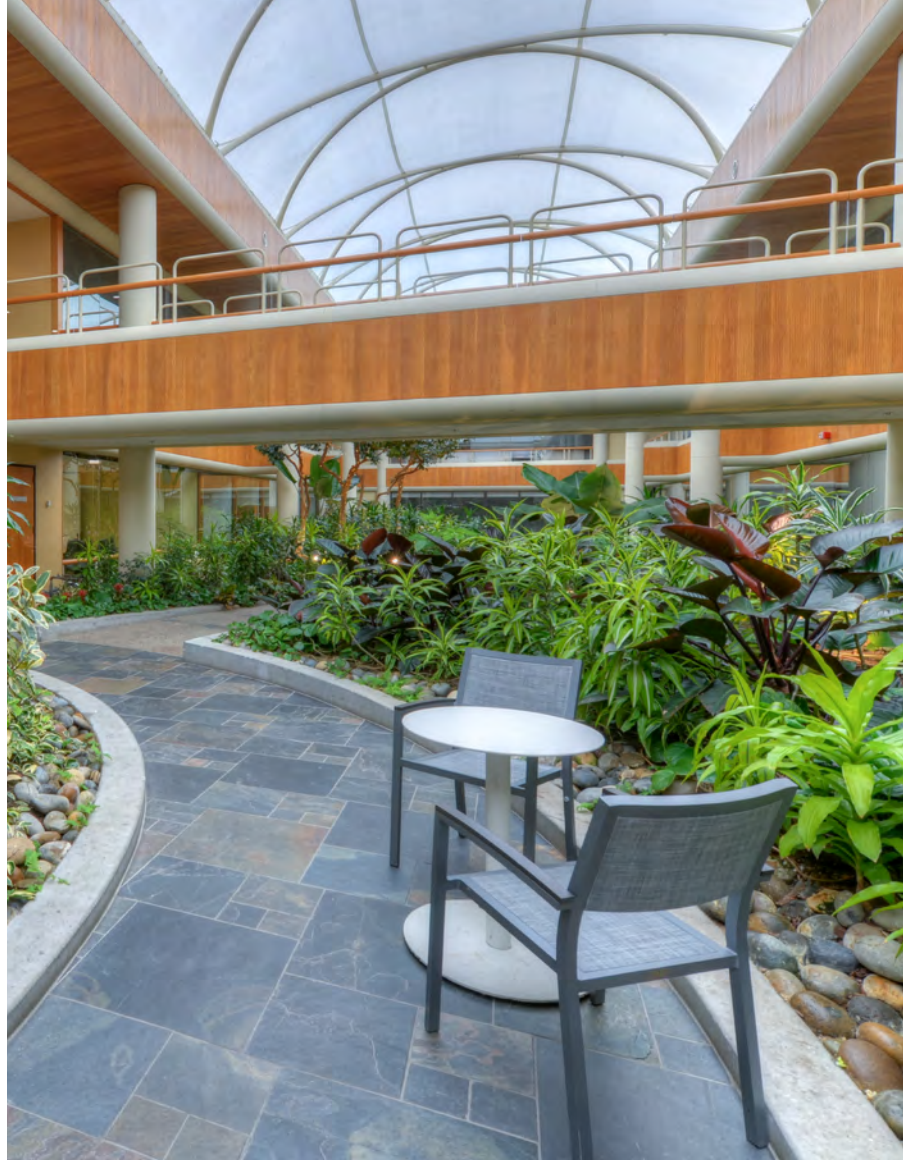


FLOOR PLAN
SUITE 100

Total Building 16,989 ft²

Parking ratio 4.0/1000







2000 ALAMEDA



1

11

9

2

4

ALAMEDA DE LAS PULGAS

- 1 - PENINSULA GOLF & COUNTRY CLUB
- 2 - SEA POT
- 3 - HEIDI'S PIE

- 4 - BIG O TIRES
- 5 - BOREL SHOPPING CENTER
- 6 - CHASE BANK

- 7 - STARBUCKS
- 8 - SAFEWAY
- 9 - SAN MATEO CITY HALL

- 10 - MC DONALDS
- 11 - INTERNAL REVENUE CENTER (IRS)
- 12 - HAYWARD CALTRAIN STATION

Surrounding Amenities 2000 ALAMEDA





2000

ALAMEDA

SAN MATEO, CA

**FOR ADDITIONAL INFORMATION, PLEASE REACH
OUT TO THE LISTING TEAM:**

WWW.PENINSULALAND.COM

ROGER FIELDS

(650) 327-2014 OFFICE
(650) 207-1610 CELL
rfields@peninsulaland.com

LOIS QUILALANG

(650) 327-2014 OFFICE
(510) 798-0336 CELL
lois@peninsulaland.com

PARKER FIELDS

(650) 327-2014 OFFICE
(650) 208-9979 CELL
parker@peninsulaland.com

MARY BLASER

(650) 327-2014 OFFICE
(408) 309-4049 CELL
mary@peninsulaland.com

