

# 175 S SAN ANTONIO

LOS ALTOS, CA

CLASS A, 2 STORY BUILDING

SUITE 101 | 1,749 ft<sup>2</sup>

SUITE 200 | 13,623 ft<sup>2</sup>

Roger Fields

(650) 327-2014 Office

(650) 207-1610 Cell

rfields@peninsulaland.com

Parker Fields

(650) 327-2014 Office

(650) 208-9979 Cell

parker@peninsulaland.com

Lois Quilalang

(650) 327-2014 Office

(510) 798-0336 Cell

lois@peninsulaland.com

Mary Blaser

(650) 327-2014 Office

(208) 309-4049 Cell

mary@peninsulaland.com

© 2021 Peninsula Land & Capital | 2390 El Camino Real, Suite 210 | Palo Alto, CA 94306 | 650-327-201

This information supplied herein is from sources we deem reliable. It is provided without any representation, warranty, or guarantee, expressed or implied as to its accuracy. Prospective Buyer or Tenant should conduct an independent investigation and verification of all matters deemed to be material, including, but not limited to, statements of income and expenses. Consult your attorney, accountant, or other professional advisor.

# Property Highlights

175 S San Antonio



Easy Access to Highway 101 & 280



On-site Parking



Dining & Retail Options Nearby



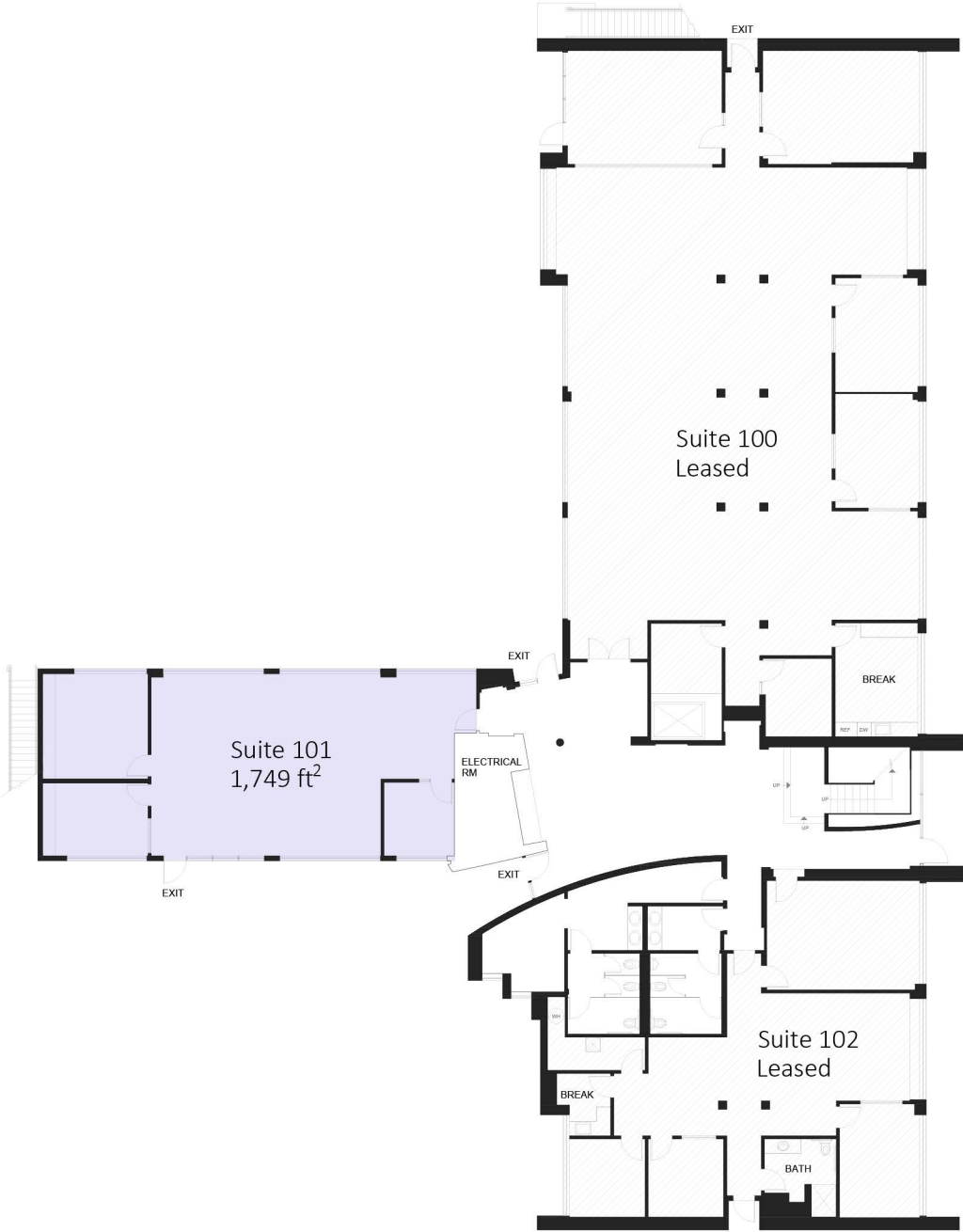
Class A Building



Flexible Floor Plan

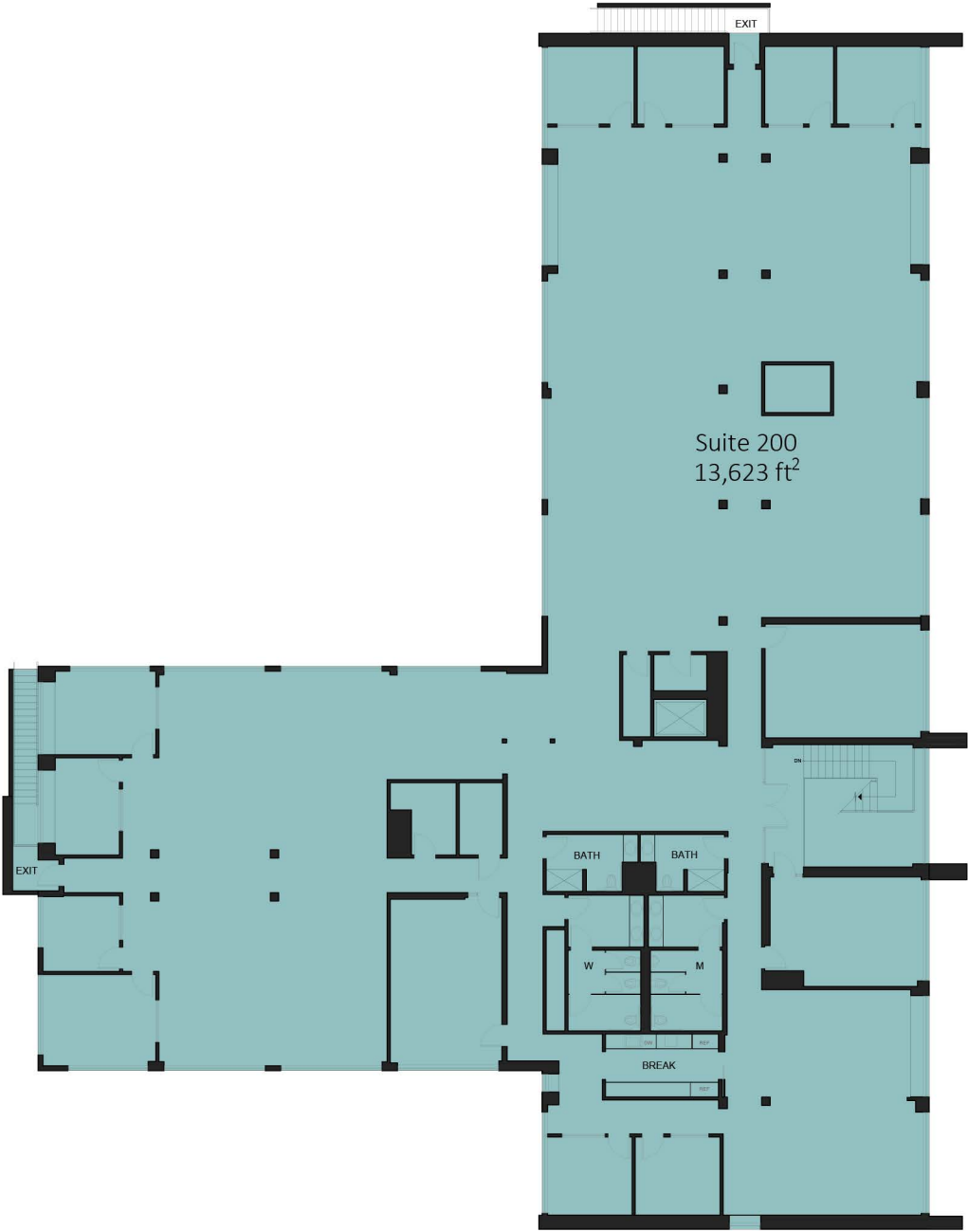
# Floor Plan | First Floor

175 S San Antonio



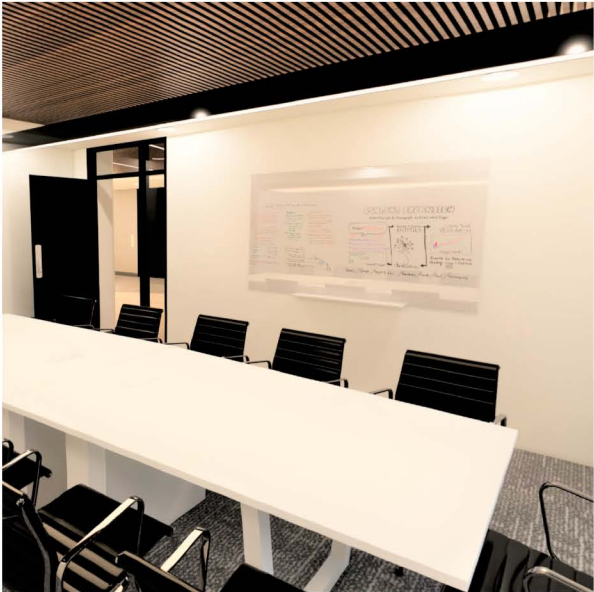
# Floor Plan | Second Floor

175 S San Antonio



# Conceptual Furniture Plan

175 S San Antonio



# Surrounding Amenities

175 S San Antonio



Safeway

Walgreens

USPS

Starbucks

ACE  
Rick's Cafe  
Urfa Bistro  
Sumika  
Manresa Bread  
Nature Gallery  
Satura Cakes

Chase

Bank of America

175 S  
San Antonio

T4 Tea  
Coffee Bar  
Florist  
UPS  
Heavenly SPA  
Lisa's Tea  
Spot A Pizza  
Lulu's on Main Street  
Rustic House Oyster Bar  
Cafe Nur

Wells Fargo



# 175 S SAN ANTONIO

LOS ALTOS, CA

**For more information please  
reach out to the listing team**

ROGER FIELDS  
(650) 327-2014 Office  
(650) 207-1610 Cell  
[rfields@peninsulaland.com](mailto:rfields@peninsulaland.com)

PARKER FIELDS  
(650) 327-2014 Office  
(650) 208-9979 Cell  
[parker@peninsulaland.com](mailto:parker@peninsulaland.com)

LOIS QUILALANG  
(650) 327-2014 Office  
(510) 798-0336 Cell  
[lois@peninsulaland.com](mailto:lois@peninsulaland.com)

MARY BLASER  
(650) 327-2014 Office  
(208) 309-4049 Cell  
[mary@peninsulaland.com](mailto:mary@peninsulaland.com)